

Some frogs of Araras Eco Lodge, Pantanal



Joanne Ocock, Leonardo Moreira

Frogs are an important part of Brazil's biodiversity. Many different frog species are known from the Pantanal wetlands. Some species are only active during the rainy season, but others will breed throughout the year.

Nearly all frog species are nocturnal and are only seen at night. Different species can be identified by their colour, shape, and the sound the males make during their breeding season.

Knowledge of frogs in the Pantanal is still very limited. Some frogs can be easily seen or heard around the pousada buildings, vegetation, small wetlands and waterholes. This guide has details of some species observed near Araras Eco Lodge during autumn.

Frog skin is delicate and may contain toxins, so it's best to avoid touching them!

Rhinella major

Common lesser toad

A small toad (~5cm) with very bumpy skin



Rhinella schneideri Rococo toad, Cururu

A large toad (~15cm) that has well defined ridges above the eyes, often seen around buildings



Photos by LM

Boana punctata
Polka dot treefrog

This frog is found across South America and glows green under a UV light!



Dendropsophus melanargyreus
Interior treefrog

A mid-sized treefrog with a very round nose, distributed across northern Brazil



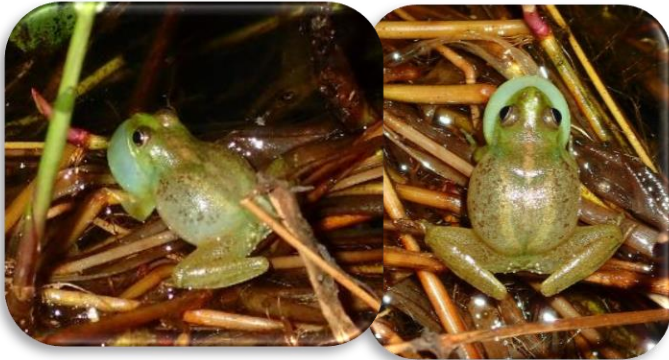
Dendropsophus nanus
Dwarf treefrog

This very small (~2cm) treefrog sounds like squeaky insect!



Lysapsus limellum
Uruguay harlequin Frog

A very small frog (~2cm), found calling in flooded grassy areas



Pseudis paradoxa
Paradox frog

This frog spends most of its time in the water, and males call through the rainy season



Scinax aff. nebulosus

A brown, patterned treefrog, often found around buildings



Scinax aff. ruber
Red-snouted treefrog

Another mid-sized treefrog, can also found around buildings



Physalaemus albonotatus
Dwarf frogs, formula 1 frog

A small ground frog, the males sound like a Formula 1 car speeding past!



Leptodactylus chaquensis
Cei's white-lipped frog

A widespread, large ground frog that can be very abundant



Leptodactylus podicipinus
Pointed belly frog

Similar to *L. chaquensis*, but smaller and lacking ridges on the back



Elachistocleis matogrosso
Two coloured frog Rã, guardinha
A small, narrow-mouthed frog that lives in leaf litter



Thanks to Andre, Akhila, Chaco, Natalia, Marcos.
Photos by JO tw: @jo_ocock